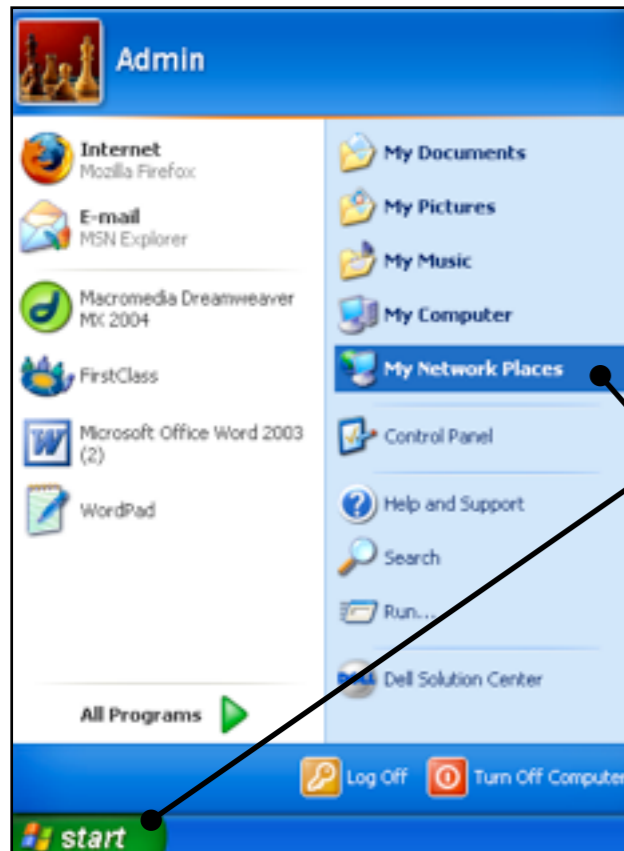
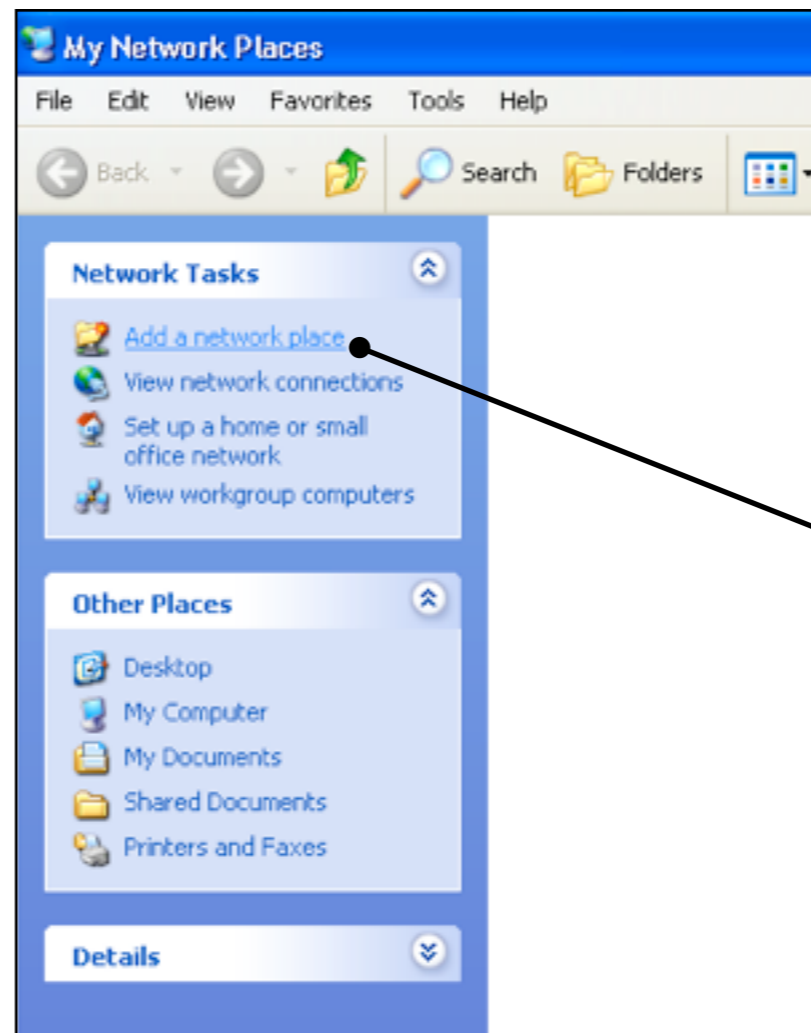


Using Your File Space (Server) from Home.

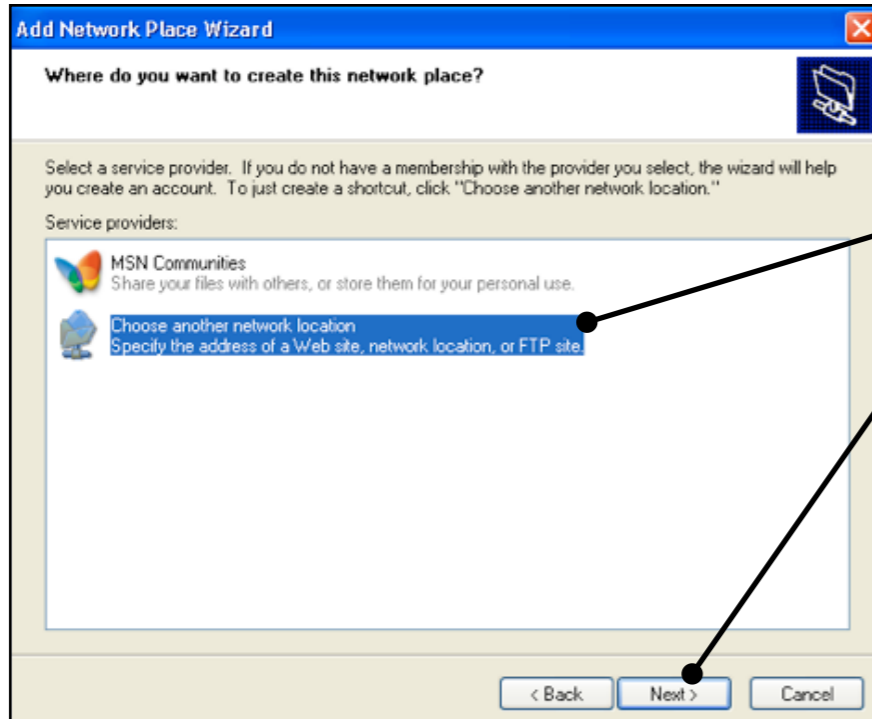
PC



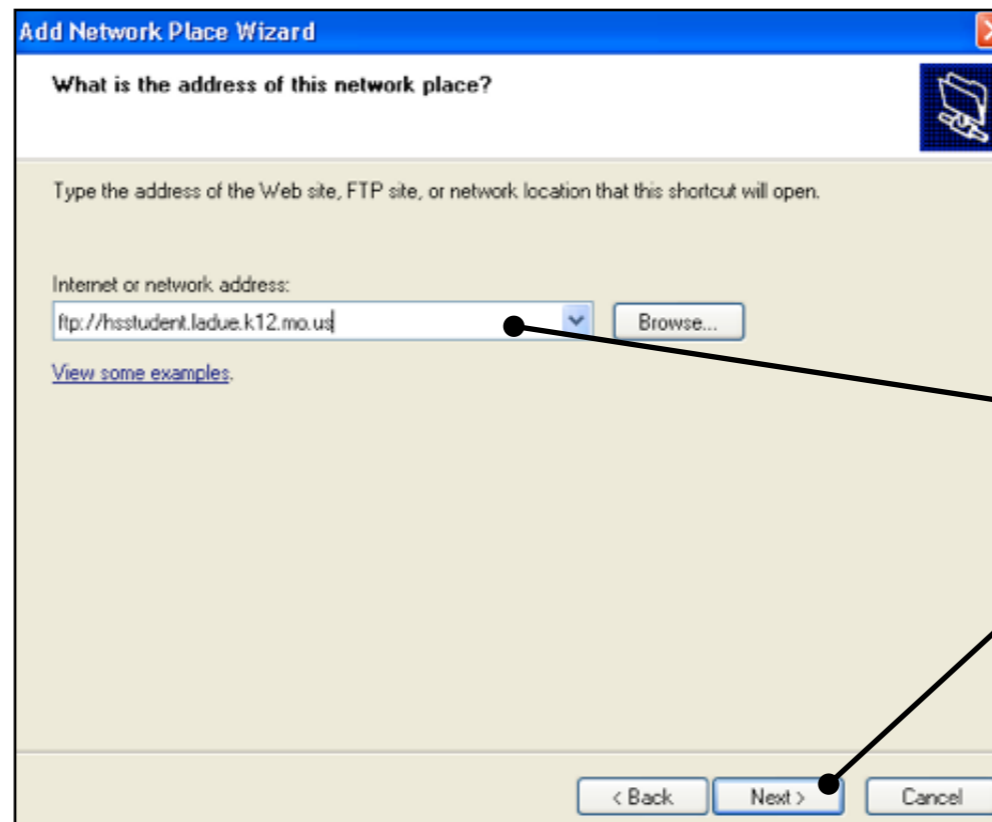
On your PC,
1. Click the Start Menu
2. Select "My Network Places"



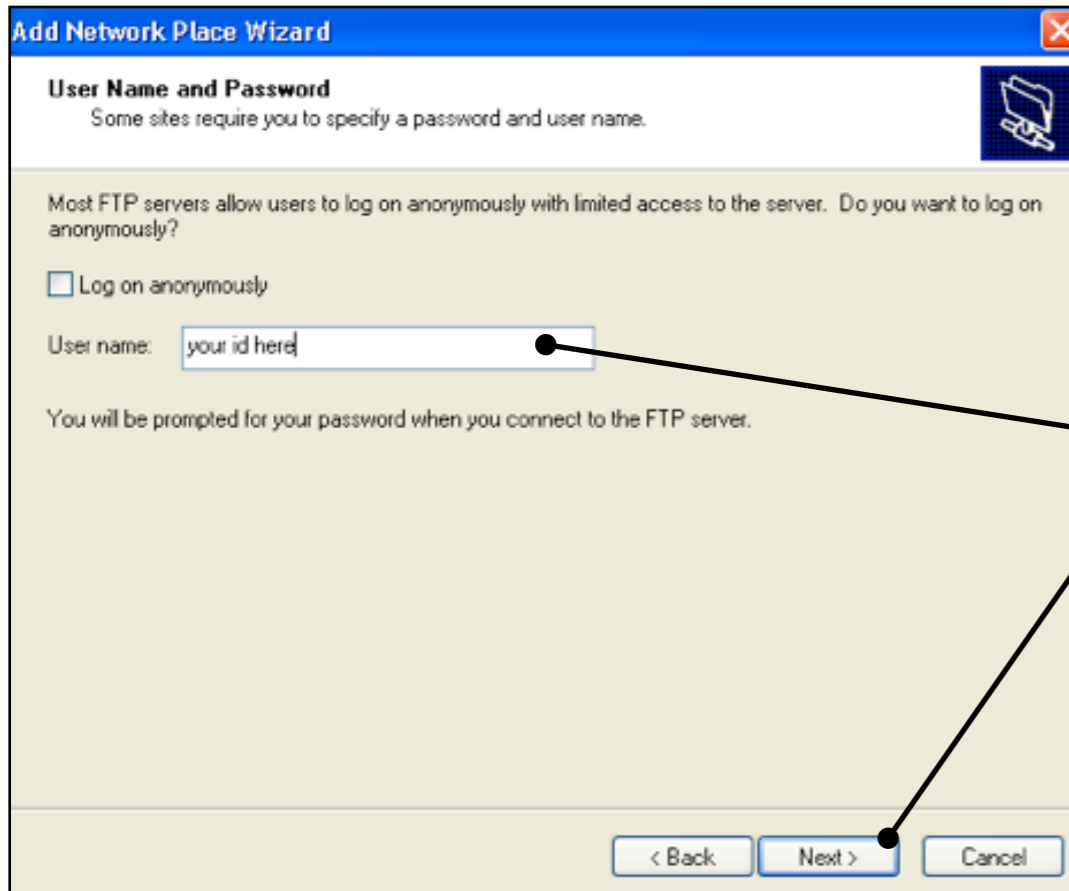
3. Select "Add a network place"



4. Select "Choose another network location" and click the "Next" button.

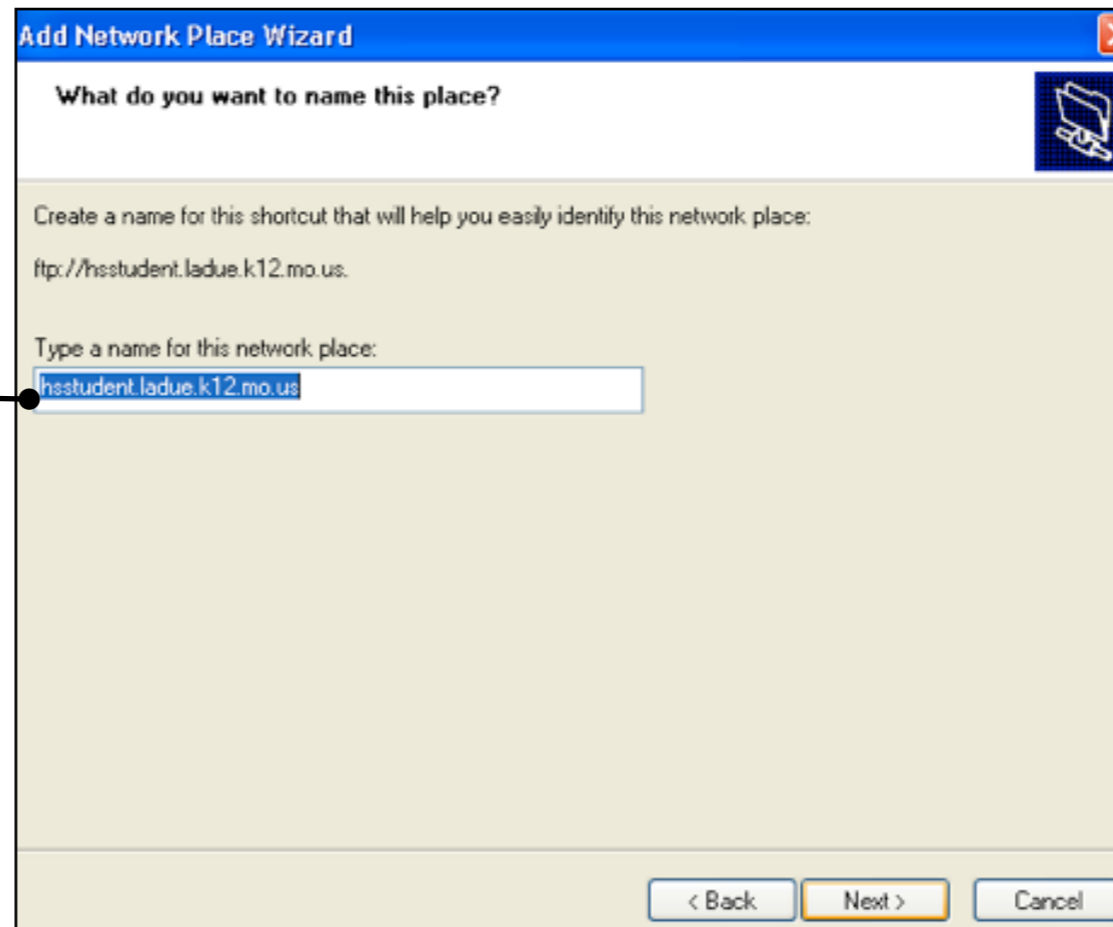


5. For your network address, type:
ftp://hsstudent.ladue.k12.mo.us
Then click "Next"



6. Type in your user name, and click "Next."

7. If preferred, you can give your remote server connection a short name. (ex. LHWHS Server)



ALL DONE, your student server is now accessible from home.